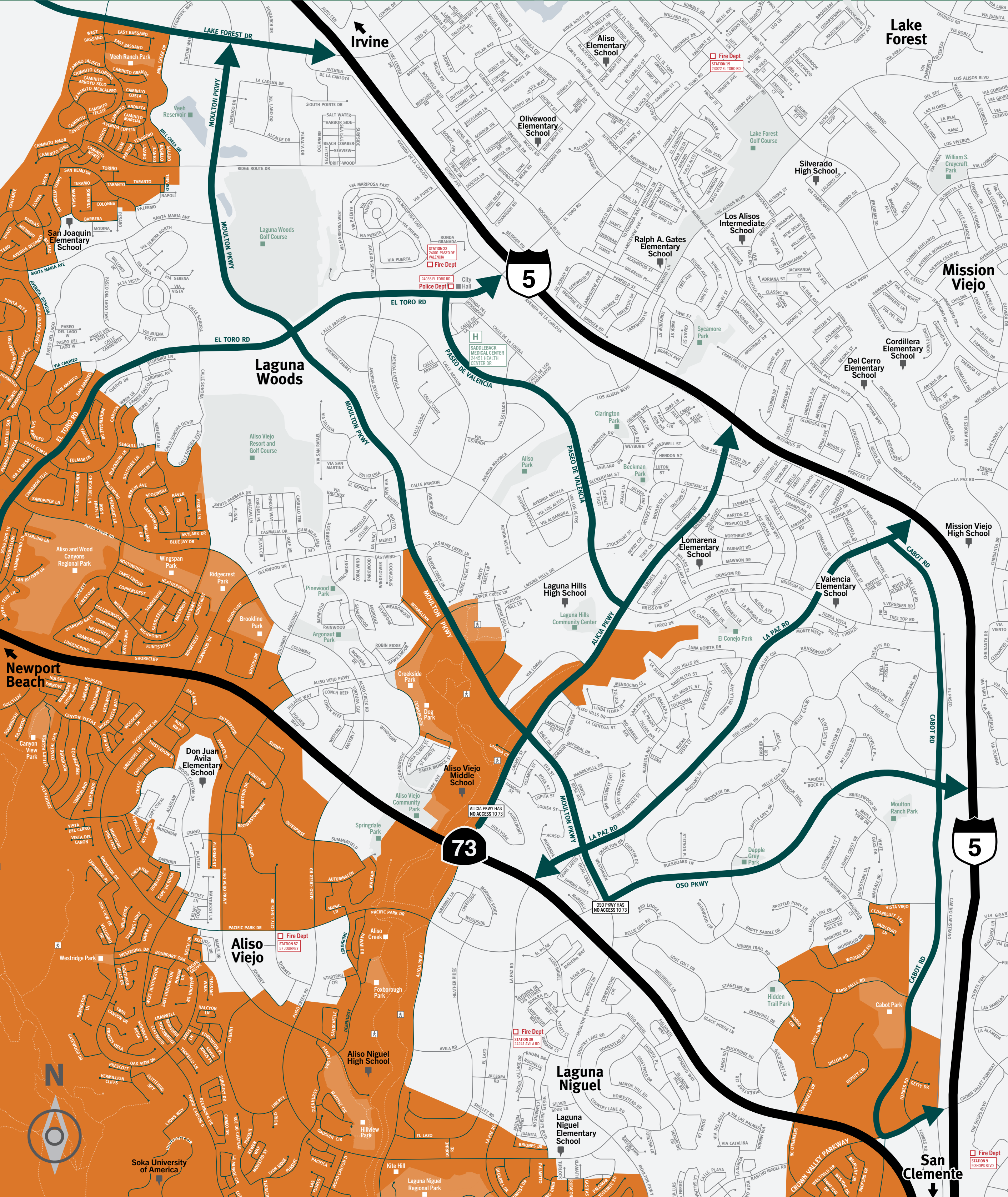


Know your way out. Your Citywide Evacuation Routes

Familiarize yourself with major routes and at least two ways out of your neighborhood in case of an evacuation.



Laguna Hills



Scan this QR code to download these maps

- Fire/Police Dept
- Evacuation Routes
- Schools
- Wildland Urban Interface FIRE SEVERITY ZONES

Emergency Alerts and Fire Information

Wildfires can strike suddenly and without warning. Public safety officials will attempt to notify residents when evacuations are necessary, but this is not always possible. Advance preparation and situational awareness are required.

Evacuation Safety Tips

What to wear?
Wear goggles, leather gloves, and heavy shoes/boots; protect skin with long cotton or wool clothing; protect airway and face with an N95 mask and bandanna. Wear a hat to protect hair from embers.

Where to go? Proceed away from the fire and meet at your family's pre-established meeting spot outside the evacuation zone.

Types of Evacuation Orders

Shelter-in-Place: You're directed to stay in your residence, school, workplace, or other building because it has been determined that staying where you are is safer than evacuating.

Evacuation Warning: Voluntary evacuation to give you advance warning in a slow moving event. This is to allow individuals time to evacuate an area

that may be under an Evacuation Order in the near future.

Evacuation Order: Mandatory evacuation order with hard road closures. Evacuated individuals will not be allowed to enter the area until the Evacuation Order is lifted.

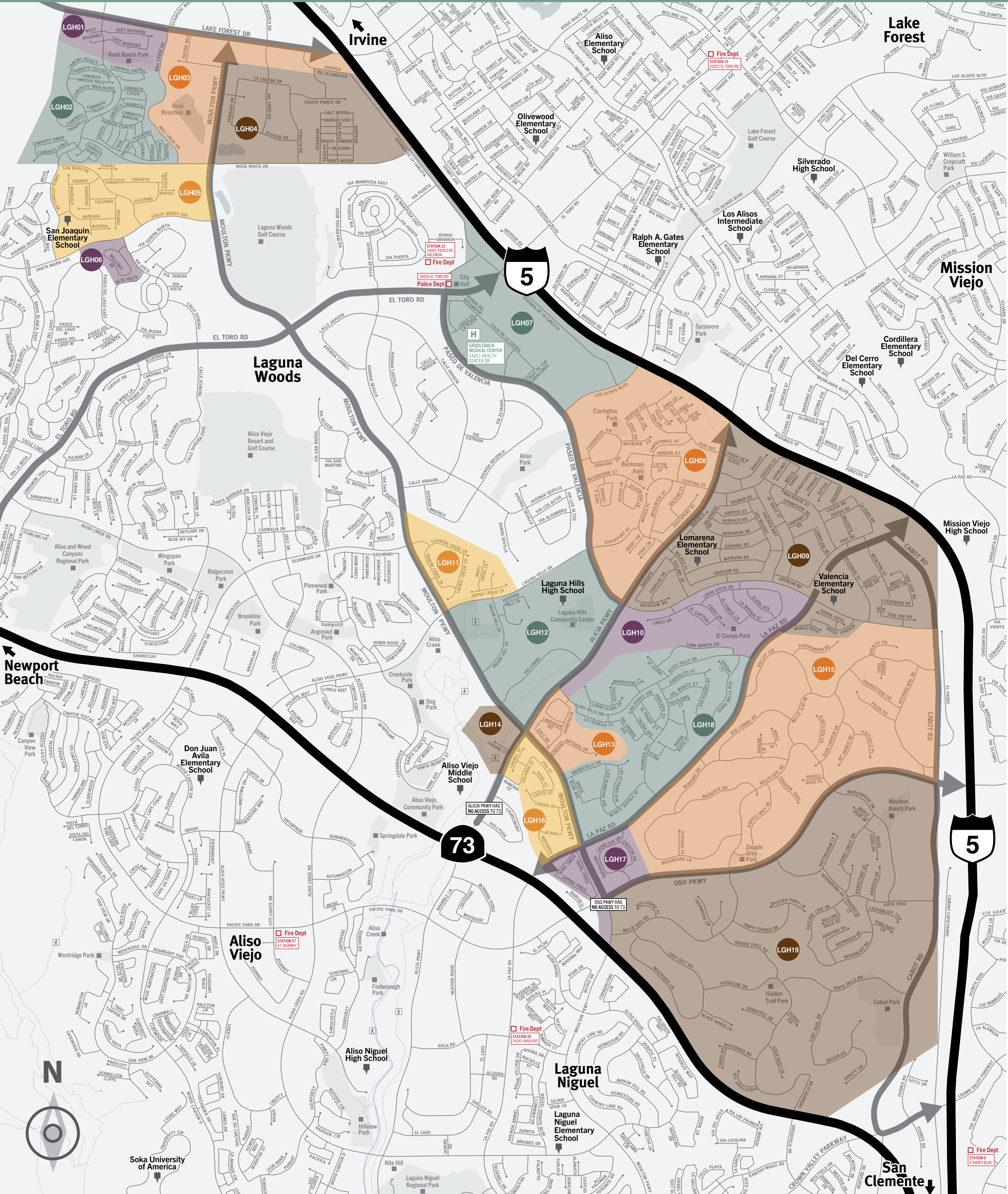


City of Laguna Hills
lagunahillsca.gov | 949-707-2641
lagunahillsca.gov/351/Emergency-Management
emergencymanagement@lagunahillsca.gov

DESIGN AND FIRECLEAR MAP PROVIDED BY CLAUDINE JAENICHEN
DESIGN NETWORK FOR EMERGENCY MANAGEMENT

Your neighborhood zones.

Note where you and your family members live, work and go to school. Then mark down these locations on this map.



Laguna Hills

Download the individual zone map for alert and warning information and further sources.



ZONE AREA
1 LGH01



ZONE AREA
2 LGH02

ZONE AREA
3 LGH03

ZONE AREA
4 LGH04



ZONE AREA
5 LGH05

ZONE AREA
6 LGH06

ZONE AREA
7 LGH07



ZONE AREA
8 LGH08

ZONE AREA
9 LGH09

ZONE AREA
10 LGH10

ZONE AREA
11 LGH11



ZONE AREA
12 LGH12



ZONE AREA
13 LGH13



ZONE AREA
14 LGH14



ZONE AREA
15 LGH15

ZONE AREA
16 LGH16

ZONE AREA
17 LGH17

ZONE AREA
18 LGH18



ZONE AREA
19 LGH19

Emergency Notifications

AlertOC is a mass notification system designed to keep residents and businesses informed of emergencies that may require immediate life-saving actions including evacuations. Alerts can be targeted to areas with an imminent threat to life and safety as well as the entire city.

Register for AlertOC by visiting: AlertOC.org

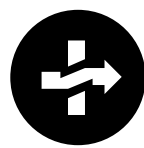


City of Laguna Hills

lagunahillsca.gov | 949-707-2641

lagunahillsca.gov/351/Emergency-Management

emergencymanagement@lagunahillsca.gov



DESIGN AND FIRECLEAR MAP PROVIDED BY CLAUDINE JAENICHEN
DESIGN NETWORK FOR EMERGENCY MANAGEMENT