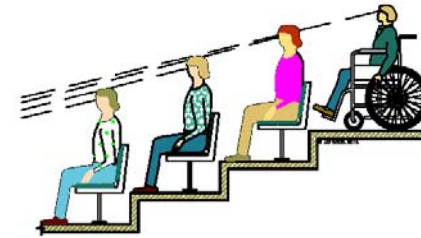
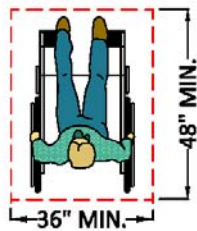


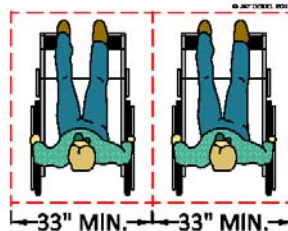
LINE OF SIGHT BETWEEN THE HEADS OF STANDING SPECTATORS
11B-802.2.2.2



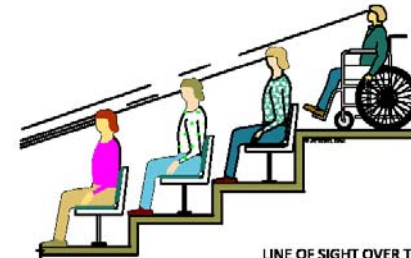
LINE OF SIGHT BETWEEN HEADS OF SEATED SPECTATORS
11B-802.2.1.2



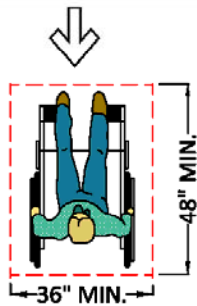
(a)
SINGLE SPACE



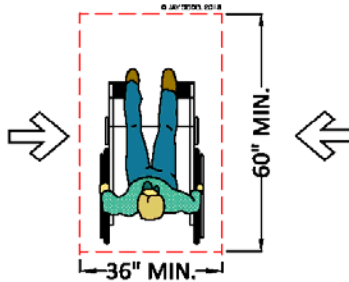
(b)
TWO SPACES



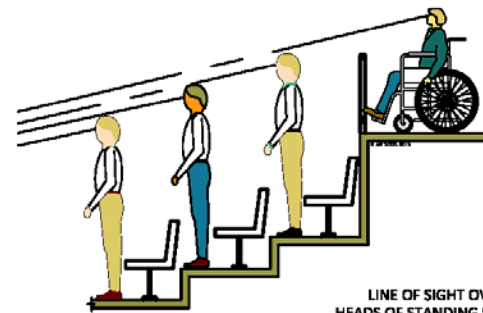
LINE OF SIGHT OVER THE HEADS OF SEATED SPECTATORS
11B-802.2.1.1



(a)
FRONT OR REAR ENTRY

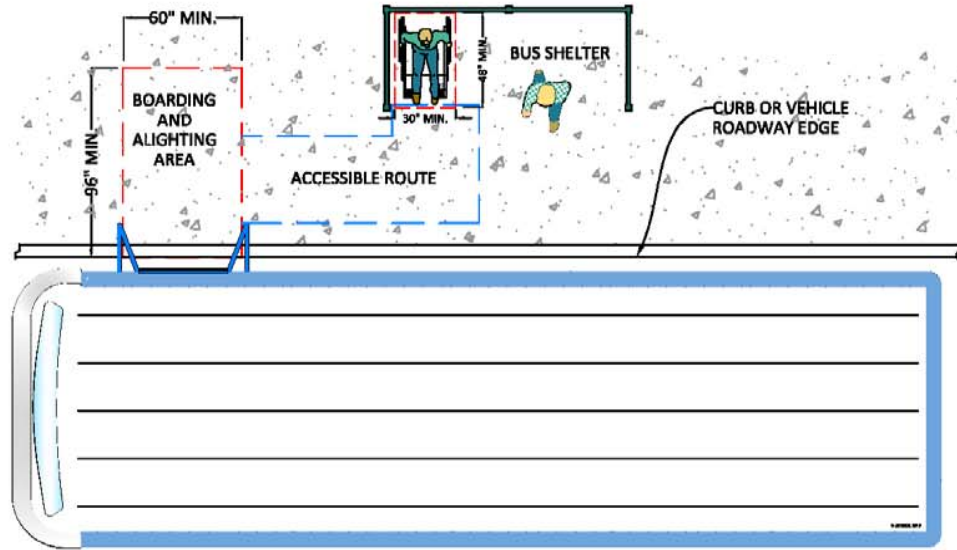


(b)
SIDE ENTRY

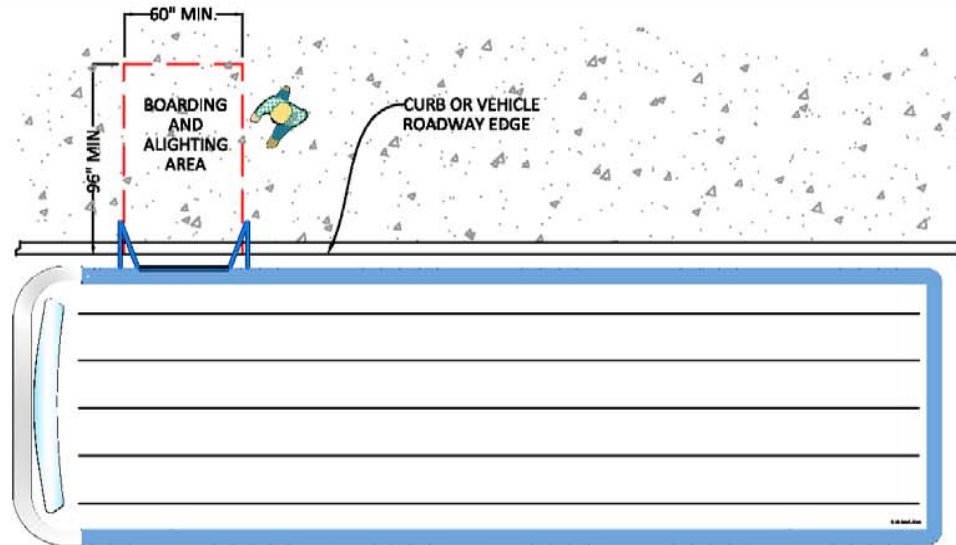


LINE OF SIGHT OVER THE HEADS OF STANDING SPECTATORS
11B-802.2.2.1





**BUS SHELTERS
11B-810.3**



**BUS BOARDING AND ALIGHTING AREA
11B-810.2.2**

