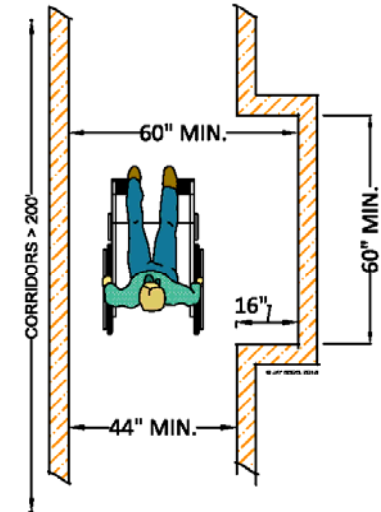


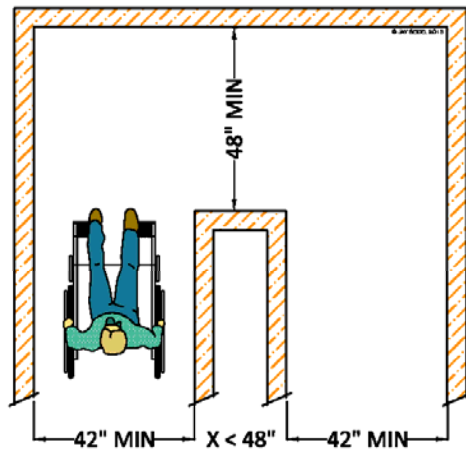
CLEAR WIDTH OF AN ACCESSIBLE ROUTE
 11B-403.5.1



WHEELCHAIR PASSING SPACE
 CORRIDORS > 200'

11B-403.5.2 CLEAR WIDTH AT TURN. WHERE THE ACCESSIBLE ROUTE MAKES A 180 DEGREE TURN AROUND AN ELEMENT WHICH IS LESS THAN 48 INCHES WIDE, CLEAR WIDTH SHALL BE 42 INCHES MINIMUM APPROACHING THE TURN, 48 INCHES MINIMUM AT THE TURN AND 42 INCHES MINIMUM LEAVING THE TURN.

EXCEPTION: WHERE THE CLEAR WIDTH AT THE TURN IS 60 INCHES MINIMUM COMPLIANCE WITH 11B-403.5.2 SHALL NOT BE REQUIRED.

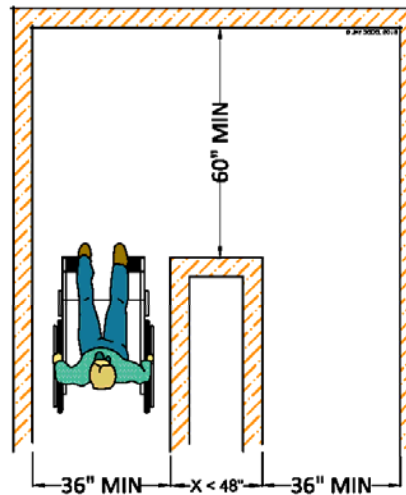


CLEAR WIDTH AT TURN

FIGURE 11B-403.5.2(a)

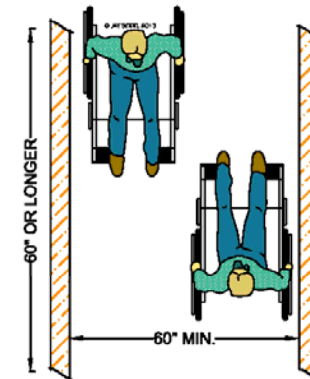
11B-403.5.2 CLEAR WIDTH AT TURN. WHERE THE ACCESSIBLE ROUTE MAKES A 180 DEGREE TURN AROUND AN ELEMENT WHICH IS LESS THAN 48 INCHES WIDE, CLEAR WIDTH SHALL BE 42 INCHES MINIMUM APPROACHING THE TURN, 48 INCHES MINIMUM AT THE TURN AND 42 INCHES MINIMUM LEAVING THE TURN.

EXCEPTION: WHERE THE CLEAR WIDTH AT THE TURN IS 60 INCHES MINIMUM COMPLIANCE WITH 11B-403.5.2 SHALL NOT BE REQUIRED.



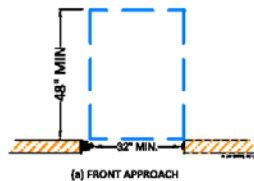
CLEAR WIDTH AT TURN

FIGURE 11B-403.5.2(b)

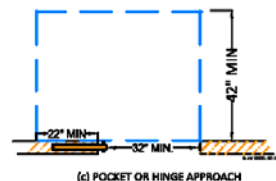


WHEELCHAIR PASSING SPACE
 PLAN VIEW FIGURE 11B-403.5.3

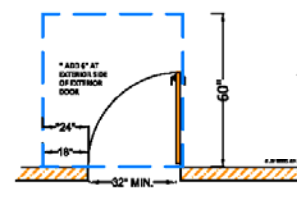




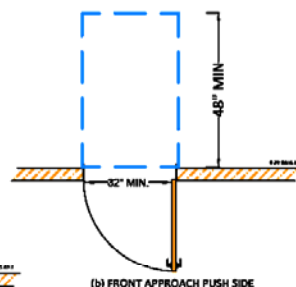
(a) FRONT APPROACH



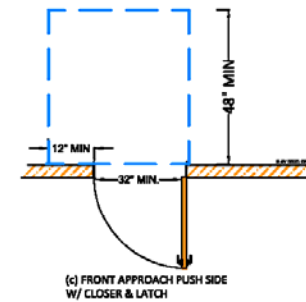
(c) POCKET OR HINGE APPROACH



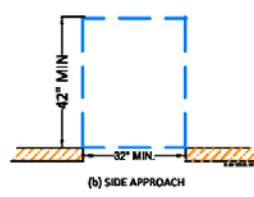
(a) FRONT APPROACH PULL SIDE



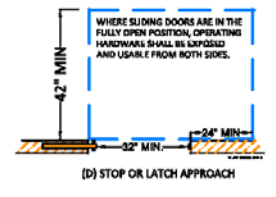
(b) FRONT APPROACH PUSH SIDE



(c) FRONT APPROACH PUSH SIDE W/ CLOSER & LATCH

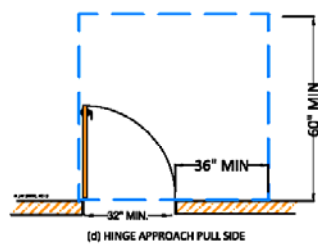


(b) SIDE APPROACH

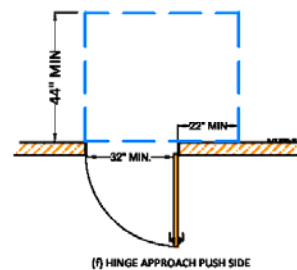


(D) STOP OR LATCH APPROACH

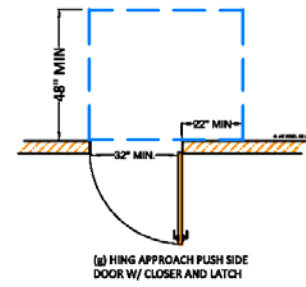
FIGURE 11B-404.2.4.2
MANEUVERING CLEARANCES AT DOORWAYS WITHOUT DOORS, SLIDING DOORS, GATES, AND FOLDING DOORS



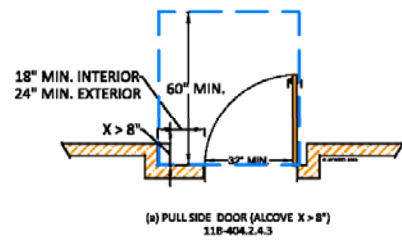
(c) HINGE APPROACH PULL SIDE



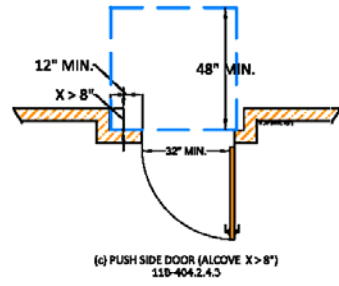
(f) HINGE APPROACH PUSH SIDE



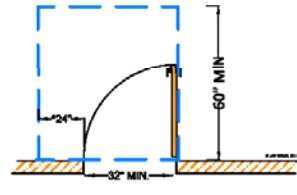
(g) HINGE APPROACH PUSH SIDE DOOR W/ CLOSER AND LATCH



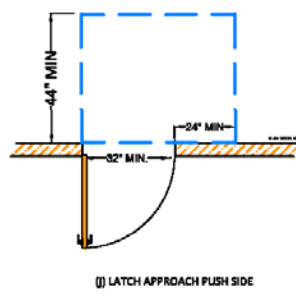
(h) PULL SIDE DOOR (ALCOVE $X > 8'$)
11B-404.2.4.3



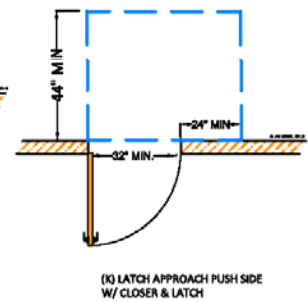
(c) PUSH SIDE DOOR (ALCOVE $X > 8'$)
11B-404.2.4.3



(h) LATCH APPROACH PULL SIDE

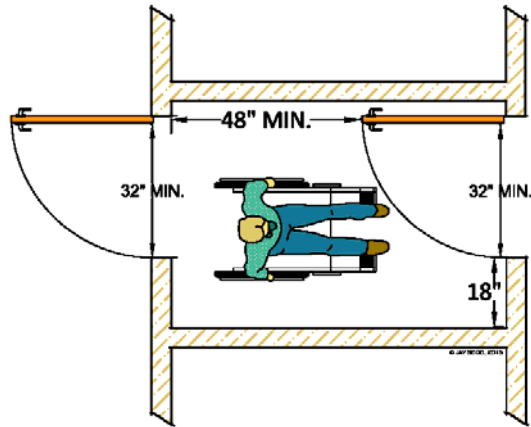


(i) LATCH APPROACH PUSH SIDE

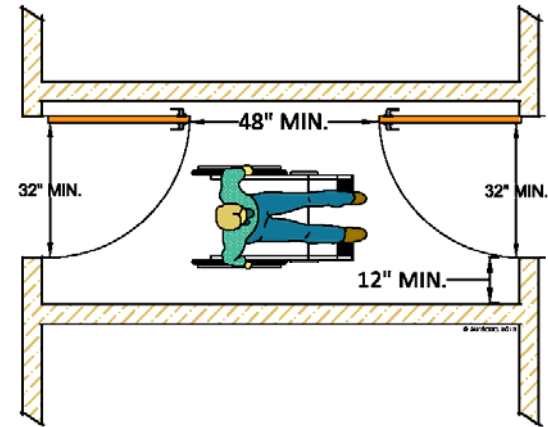


(k) LATCH APPROACH PUSH SIDE W/ CLOSER & LATCH

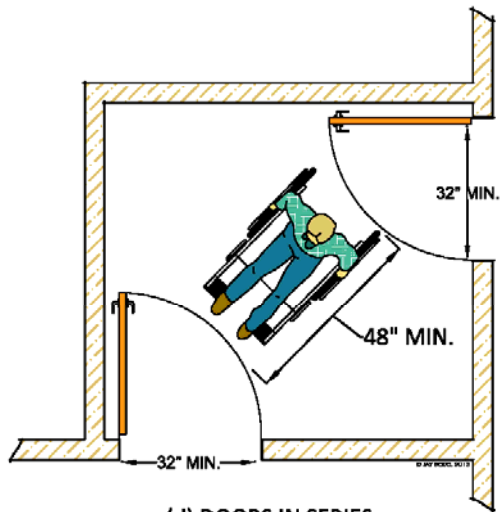




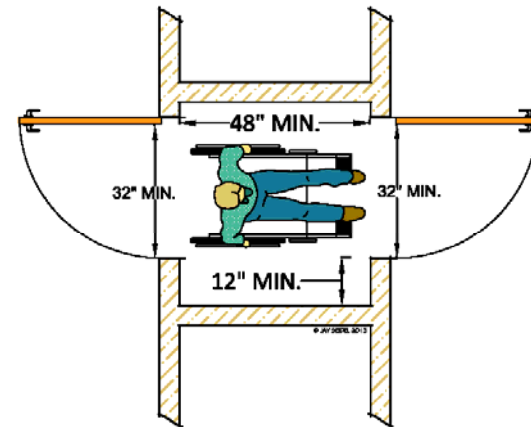
(a) DOORS IN SERIES
11B-404.2.6



(c) DOORS IN SERIES
11B-404.2.6



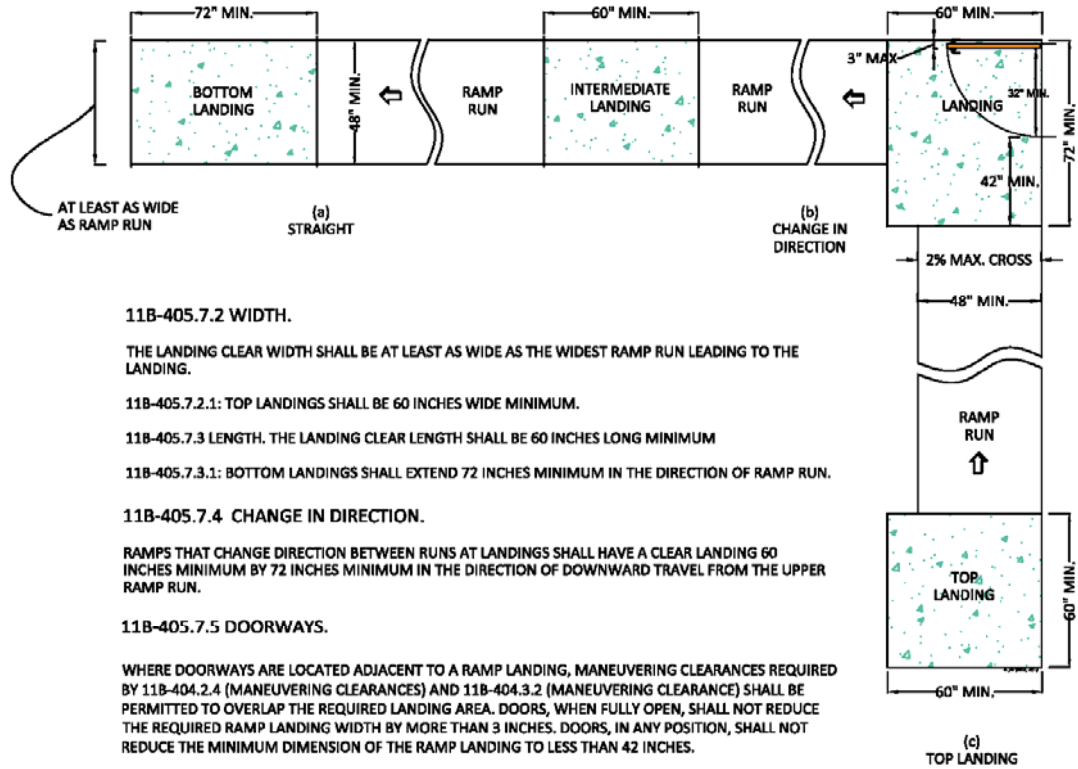
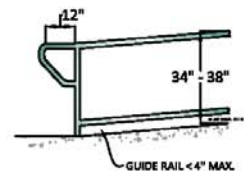
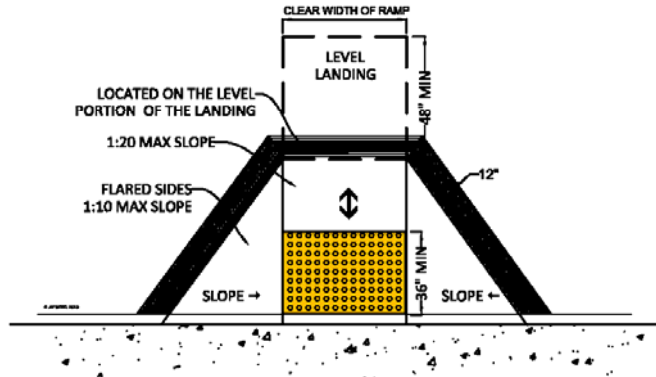
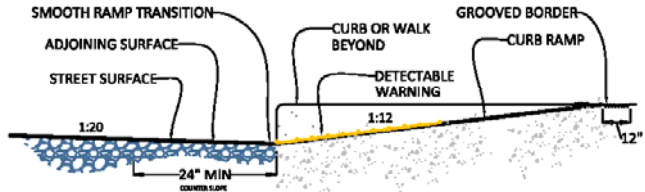
(d) DOORS IN SERIES
11B-404.2.6



(b) DOORS IN SERIES
11B-404.2.6



11B-406.5.8 COUNTER SLOPE. COUNTER SLOPES OF ADJOINING GUTTERS AND ROAD SURFACES IMMEDIATELY ADJACENT TO AND WITHIN 24 INCHES OF THE CURB RAMP SHALL NOT BE STEEPER THAN 1:20. THE ADJACENT SURFACES AT TRANSITIONS AT CURB RAMPS TO WALKS, GUTTERS, AND STREETS SHALL BE AT THE SAME LEVEL.



11B-405.7.2 WIDTH.

THE LANDING CLEAR WIDTH SHALL BE AT LEAST AS WIDE AS THE WIDEST RAMP RUN LEADING TO THE LANDING.

11B-405.7.2.1: TOP LANDINGS SHALL BE 60 INCHES WIDE MINIMUM.

11B-405.7.3 LENGTH. THE LANDING CLEAR LENGTH SHALL BE 60 INCHES LONG MINIMUM

11B-405.7.3.1: BOTTOM LANDINGS SHALL EXTEND 72 INCHES MINIMUM IN THE DIRECTION OF RAMP RUN.

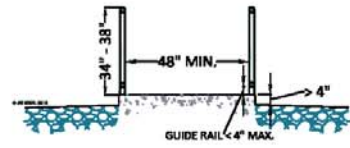
11B-405.7.4 CHANGE IN DIRECTION.

RAMPS THAT CHANGE DIRECTION BETWEEN RUNS AT LANDINGS SHALL HAVE A CLEAR LANDING 60 INCHES MINIMUM BY 72 INCHES MINIMUM IN THE DIRECTION OF DOWNWARD TRAVEL FROM THE UPPER RAMP RUN.

11B-405.7.5 DOORWAYS.

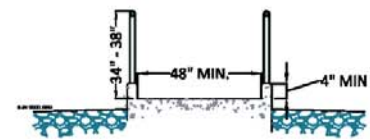
WHERE DOORWAYS ARE LOCATED ADJACENT TO A RAMP LANDING, MANEUVERING CLEARANCES REQUIRED BY 11B-404.2.4 (MANEUVERING CLEARANCES) AND 11B-404.3.2 (MANEUVERING CLEARANCE) SHALL BE PERMITTED TO OVERLAP THE REQUIRED LANDING AREA. DOORS, WHEN FULLY OPEN, SHALL NOT REDUCE THE REQUIRED RAMP LANDING WIDTH BY MORE THAN 3 INCHES. DOORS, IN ANY POSITION, SHALL NOT REDUCE THE MINIMUM DIMENSION OF THE RAMP LANDING TO LESS THAN 42 INCHES.

FIGURE 11B-405.7 RAMP LANDINGS



11B-405.9.2 CURB OR BARRIER.

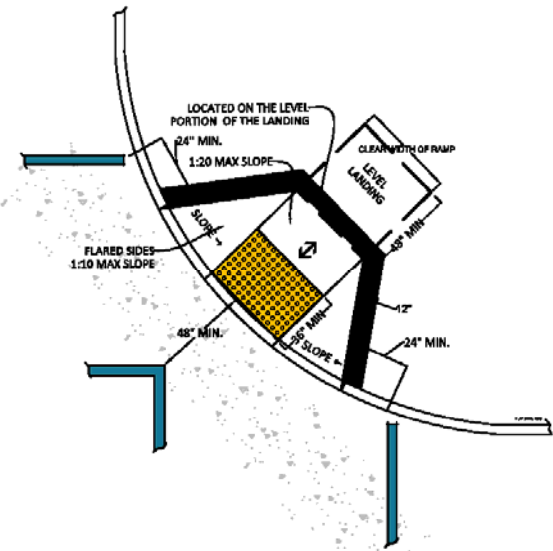
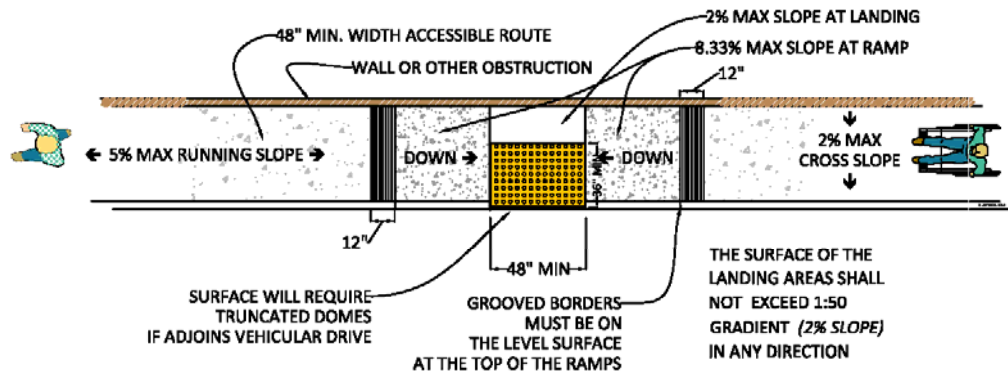
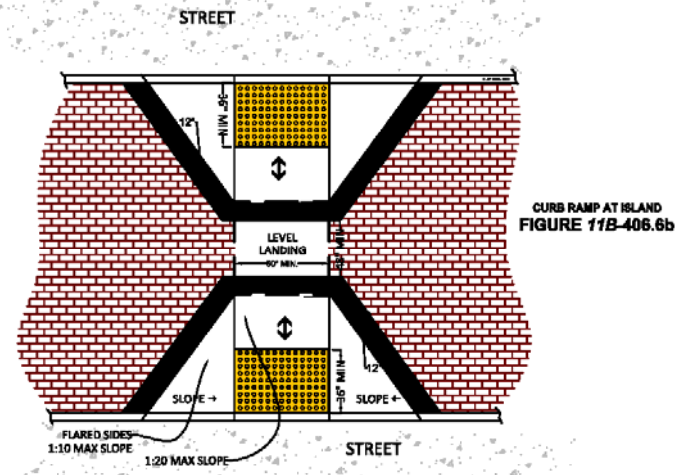
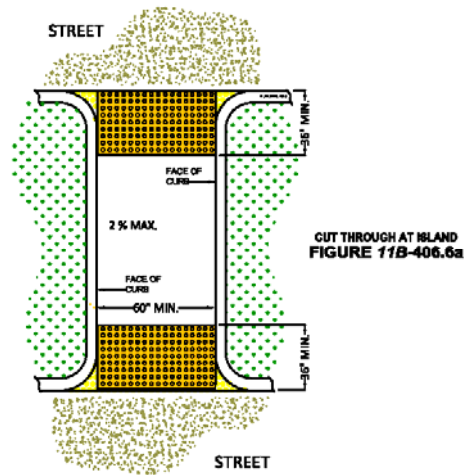
A CURB, 2 INCHES HIGH MINIMUM, OR BARRIER SHALL BE PROVIDED THAT PREVENTS THE PASSAGE OF A 4 INCH DIAMETER SPHERE, WHERE ANY PORTION OF THE SPHERE IS WITHIN 4 INCHES OF THE FINISH FLOOR OR GROUND SURFACE. TO PREVENT WHEEL ENTRAPMENT, THE CURB OR BARRIER SHALL PROVIDE A CONTINUOUS AND UNINTERRUPTED BARRIER ALONG THE LENGTH OF THE RAMP.

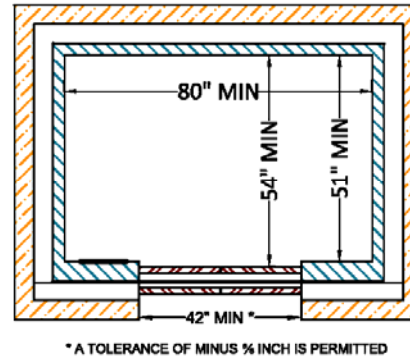
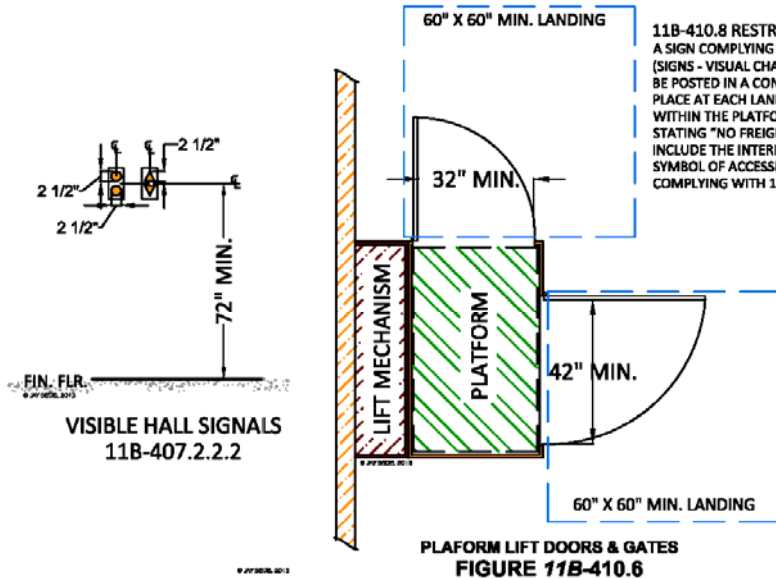


11B-405.9.2 CURB OR BARRIER.

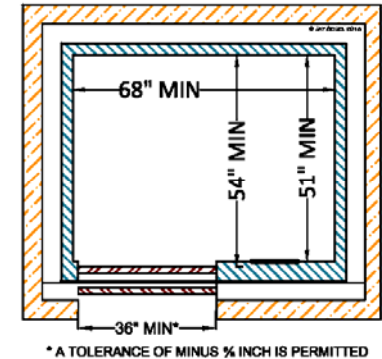
A CURB, 2 INCHES HIGH MINIMUM, OR BARRIER SHALL BE PROVIDED THAT PREVENTS THE PASSAGE OF A 4 INCH DIAMETER SPHERE, WHERE ANY PORTION OF THE SPHERE IS WITHIN 4 INCHES OF THE FINISH FLOOR OR GROUND SURFACE. TO PREVENT WHEEL ENTRAPMENT, THE CURB OR BARRIER SHALL PROVIDE A CONTINUOUS AND UNINTERRUPTED BARRIER ALONG THE LENGTH OF THE RAMP.



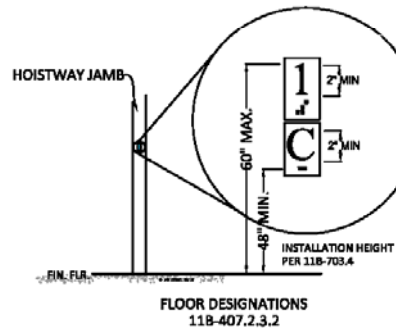




ELEVATOR CAR CENTER DOOR
FIGURE 11B-407.4.1(a)



ELEVATOR CAR SIDE DOOR
FIGURE 11B-407.4.1(b)



11B-407.4.6.1 LOCATION. CONTROLS SHALL BE LOCATED WITHIN ONE OF THE REACH RANGES SPECIFIED IN 11B-308 (REACH RANGES).

11B-407.4.6.2.1 SIZE AND SHAPE. BUTTONS SHALL HAVE SQUARE SHOULDERS, BE 3/4 INCH MINIMUM IN THEIR SMALLEST DIMENSION AND BE RAISED 1/8 INCH PLUS OR MINUS 1/32 INCH ABOVE THE SURROUNDING SURFACE.

11B-407.4.6.2.2 ARRANGEMENT. BUTTONS SHALL BE ARRANGED WITH NUMBERS IN ASCENDING ORDER. WHEN TWO OR MORE COLUMNS OF BUTTONS ARE PROVIDED THEY SHALL READ FROM LEFT TO RIGHT.

11B-407.4.6.2.3 ILLUMINATION. CAR CONTROL BUTTONS SHALL BE ILLUMINATED.

11B-407.4.6.2.4 OPERATION. CAR CONTROL BUTTONS SHALL BE ACTIVATED BY A MECHANICAL MOTION THAT IS DETECTABLE.

11B-407.4.7.1 BUTTONS. CAR CONTROL BUTTONS SHALL COMPLY WITH 11B-407.4.7.1.

11B-407.4.7.1.1 TYPE. CONTROL BUTTONS SHALL BE IDENTIFIED BY RAISED CHARACTERS OR SYMBOLS, WHITE ON A BLACK BACKGROUND, COMPLYING WITH 11B-703.2 (SIGNS - RAISED CHARACTERS), AND BRAILLE COMPLYING WITH 11B-703.3 (BRAILLE).

11B-407.4.7.1.2 LOCATION. RAISED CHARACTERS OR SYMBOLS AND BRAILLE DESIGNATIONS SHALL BE PLACED IMMEDIATELY TO THE LEFT OF THE CONTROL BUTTON TO WHICH THE DESIGNATIONS APPLY.

11B-407.4.7.1.3 SYMBOLS. THE CONTROL BUTTON FOR THE EMERGENCY STOP, ALARM, DOOR OPEN, DOOR CLOSE, MAIN ENTRY FLOOR, AND PHONE, SHALL BE IDENTIFIED WITH RAISED SYMBOLS AND BRAILLE AS SHOWN IN TABLE 11B-407.4.7.1.4

VISIBLE INDICATORS. BUTTONS WITH FLOOR DESIGNATIONS SHALL BE PROVIDED WITH VISIBLE INDICATORS TO SHOW THAT A CALL HAS BEEN REGISTERED. THE VISIBLE INDICATION SHALL EXTINGUISH WHEN THE CAR ARRIVES AT THE DESIGNATED FLOOR.

11B-407.4.7.1.5 BUTTON SPACING. A MINIMUM CLEAR SPACE OF 3/8 INCH OR OTHER SUITABLE MEANS OF SEPARATION SHALL BE PROVIDED BETWEEN ROWS OF CONTROL BUTTONS.

TABLE 11B-407.4.7.1.3

ELEVATOR CONTROL BUTTON IDENTIFICATION

CONTROL BUTTON	TACTILE	BRaille
EMERGENCY STOP		
ALARM		
DOOR OPEN		
DOOR CLOSE		
MAIN ENTRY FLOOR		
PHONE		

FLOOR DESIGNATIONS
11B-407.2.3.1

